

Gilchrist County, Florida Future Land Use Map

TOWNSHIP 07 SOUTH

TOWNSHIP 08 SOUTH

TOWNSHIP 09 SOUTH

TOWNSHIP 10 SOUTH

TOWNSHIP 11 SOUTH

General Legend

Misc. Symbols

- Inset Lines
- Nature Coast Greenway
- Rail Road
- Swamp
- County Line
- Quadrangles
- City Limits
- Boat Ramp
- Park & Boat Ramp
- Cemetery
- Church
- Stream

Centerlines

- County Maintained
- Not County Maintained
- Paved Roads
- Private
- Trail

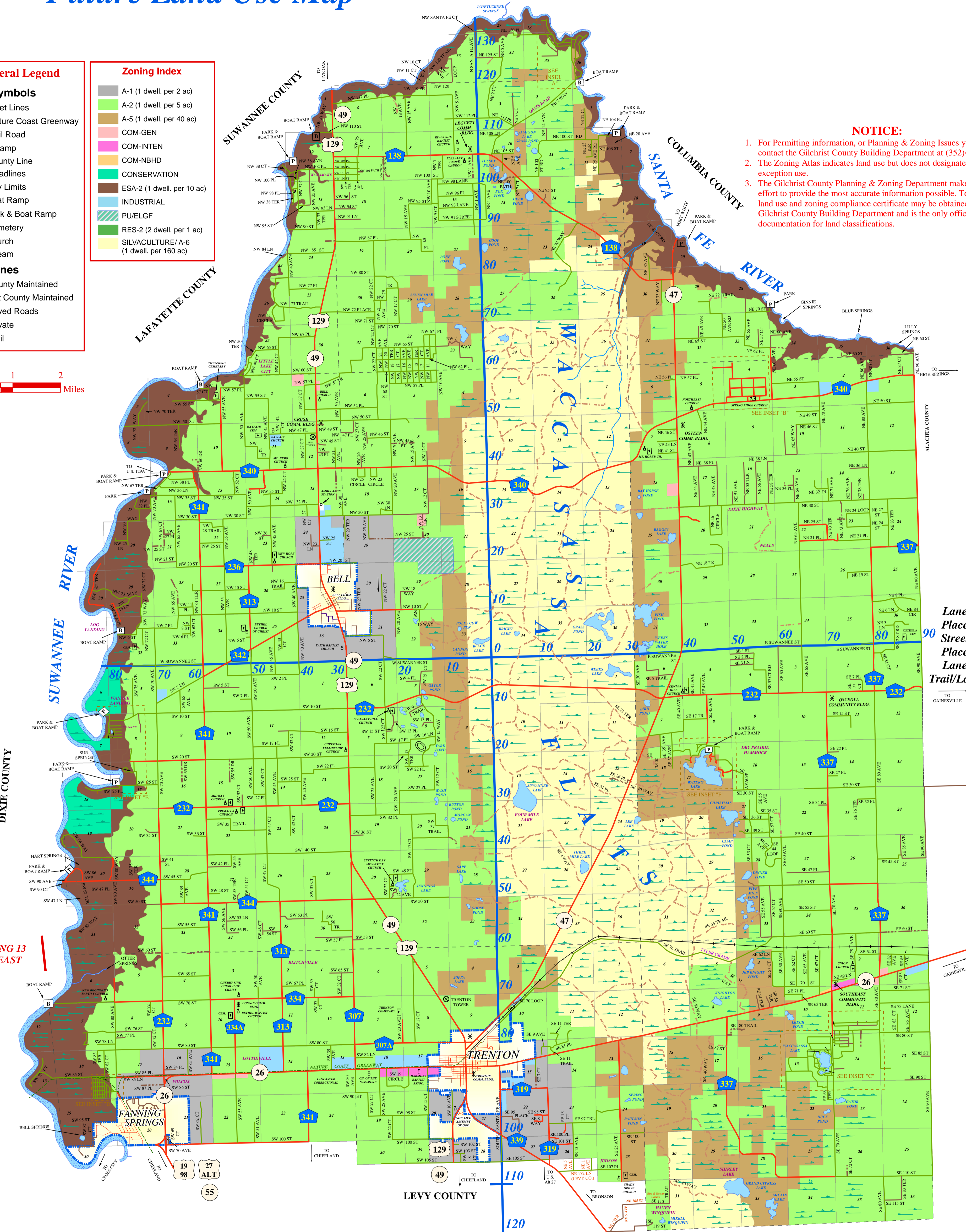
Zoning Index

- A-1 (1 dwell. per 2 ac)
- A-2 (1 dwell. per 5 ac)
- A-5 (1 dwell. per 40 ac)
- COM-GEN
- COM-INTEN
- COM-NBHD
- CONSERVATION
- ESA-2 (1 dwell. per 10 ac)
- INDUSTRIAL
- PU/ELGF
- RES-2 (2 dwell. per 1 ac)
- SILVACULTURE/A-6 (1 dwell. per 160 ac)



NOTICE:

- For Permitting information, or Planning & Zoning Issues you may contact the Gilchrist County Building Department at (352)463-3173.
- The Zoning Atlas indicates land use but does not designate special exception use.
- The Gilchrist County Planning & Zoning Department makes every effort to provide the most accurate information possible. To ensure land use and zoning compliance certificate may be obtained from the Gilchrist County Building Department and is the only official documentation for land classifications.



This map is produced by the Gilchrist County Property Appraiser's Office
Damon C. Leggett Property Appraiser
 In Cooperation with Gilchrist County and the Gilchrist County Board of County Commissioners

NOTE: This map has been compiled from the most authentic information available and neither Gilchrist County nor the Gilchrist County Property Appraiser's Office assumes responsibility for errors or omissions.

(NOT TO SCALE)

Chris Ruggles - Cadastral
Crystal Black - Assistant

